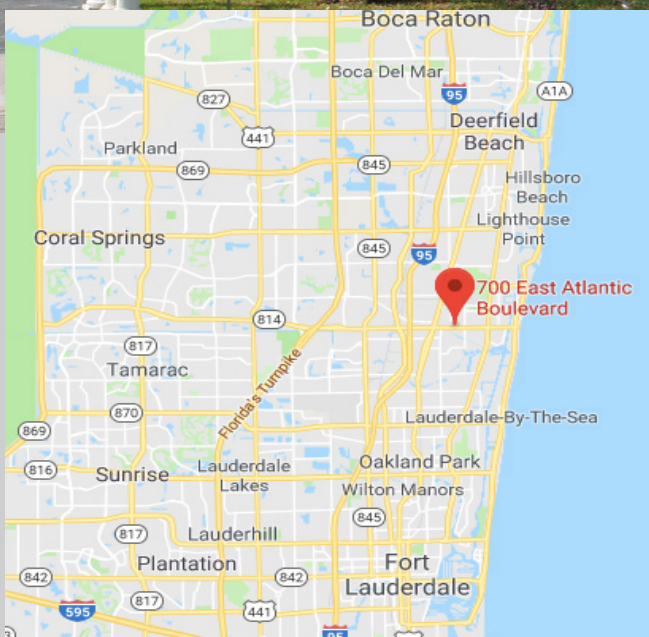




700 E. Atlantic Blvd., Pompano Beach, FL 33060

Lat 26.232, Long -80.116



PROPERTY HIGHLIGHTS

- Just East of the I-95 Exit
- Private Parking
- Excellent Access and Visibility
- In the Heart of the Pompano Beach CRA.
- Direct Frontage on Atlantic Blvd.
- Zoning: Commercial
- Traffic Count (2019): 36,261 ADT

AVAILABLE

- Suite # 202: 650 Sq. Ft.
- Suite # 205: 2,000 Sq. Ft.
- Suite # 303: 1,900 Sq. Ft.

RENT

- \$16 / Sq. Ft. MG

DEMOGRAPHICS

	1 Mile Radius	3-Mile Radius	5-Mile Radius
2019 Population	17,417	117,414	269,664
2024 Projection	18,449	123,003	283,415
2019 Avg. HH Income	\$63,609	\$73,770	\$74,750

For more of our listings visit our website:
www.RichCommercialGroup.com

No warranty expressed or implied has been made to the accuracy of the information provided herein, no liability assumed for error omission
Licensed Real Estate Broker

Leasing Contact:

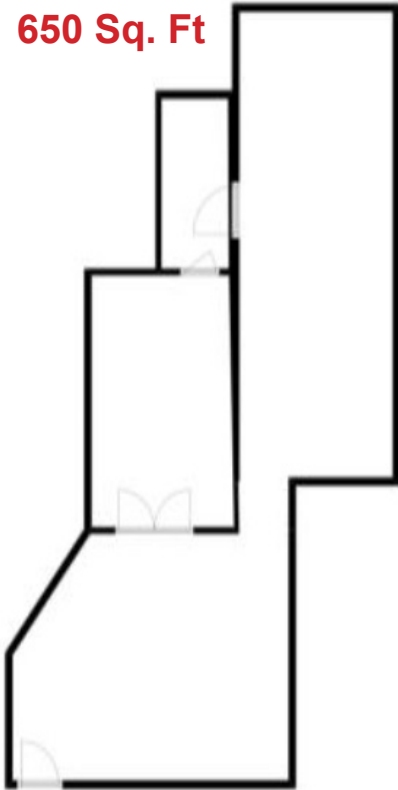
Alex Rich

954-554-1526

Alex@rcgroupre.com



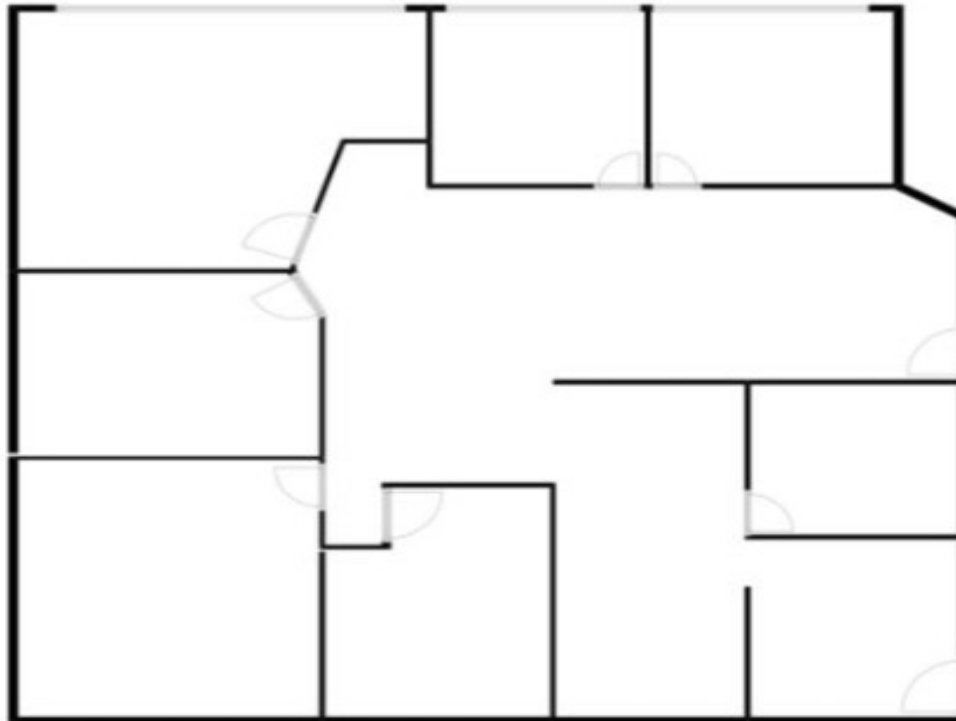
Suite # 202
650 Sq. Ft



Suite # 205
2,000 Sq. Ft.



Suite # 303
1,900 Sq. Ft



For more of our listings visit our website:
www.RichCommercialGroup.com

No warranty expressed or implied has been made to the accuracy of the information provided herein, no liability assumed for error omission
Licensed Real Estate Broker

Leasing Contact:
Alex Rich
954-554-1526
Alex@rcgroupre.com

